



Reliable Data and Insightful Solutions that suit your needs

GeoWarehouse and Teranet Easement Program

April 2024

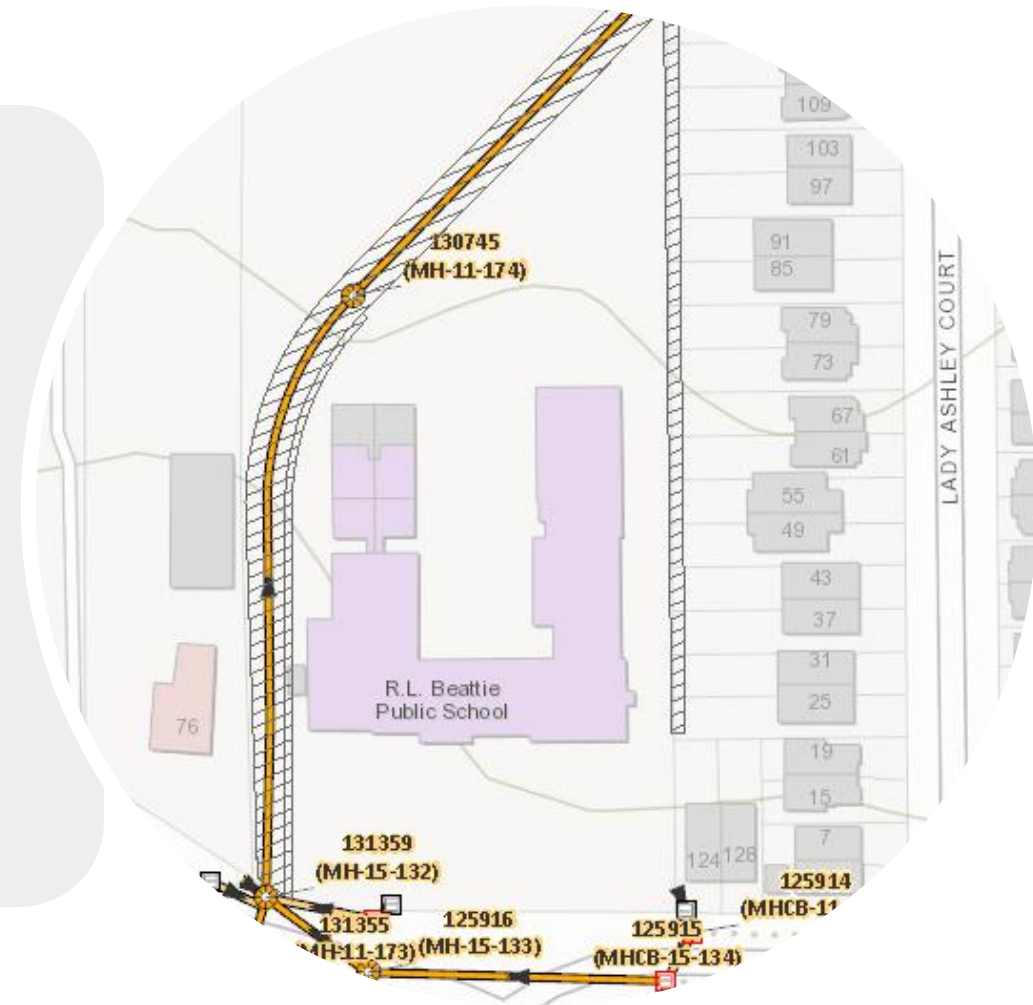
Easement Program

Creating a Centralize Spatial Easement Inventory

What is an easement?

An **easement** is an interest in land owned by another that entitles its holder to a specific and limited use.

For example, a municipality is entitled to access a portion of private property for the purpose of maintaining infrastructure that it owns on that property.



Why is Easement Management Important?



The Challenge

- Legacy registration process
- Incomplete easement information
- Inaccurate easement information
- Data silos
- Lack of a complete, accurate and centralized easement inventory



The Risk

- Gaps in asset management
- Blind-spots with infrastructure operations
- Public Safety
- “Not knowing what Easements you have and where they are located”



Who Uses Easement Data?

Easement data is required daily by:

- ✓ Operations
- ✓ Engineering
- ✓ Building Services
- ✓ Planning & Development
- ✓ Real Estate
- ✓ Legal Services

The Easement Program empowers teams to quickly determine if there is an easement on a property and access all the relevant documentation concerning the easement.

The image displays a street map of Capreol, Ontario, with a blue highlighted easement path crossing several streets. To the right is a 'Transfer/Deed of Land' form (Form 1 - Land Registration Return Act, 1994) for parcel 690602. The form includes fields for property details, consideration, description, and signatures of the parties involved, including the Mayor and Town Clerk of Capreol.

Benefits

- ✓ Centralized spatial easement inventory
- ✓ Identify missing or misaligned easements
- ✓ Prioritize investigation & acquisition of missing easements
- ✓ Reduce time, costs, and resources required to research easements
- ✓ Quickly access critical information for emergency response and field operations
- ✓ Formalize planning for release of easements and risk mitigation
- ✓ Enhance organization's infrastructure GIS data





Thank you

Richard Norris

richard.norris@teranet.ca



**Advance your
knowledge and
Increase your value**




To learn more,
scan the QR code or visit
geowarehouse.ca/academy



Follow us on social



@geowarehouse

A photograph of a modern, multi-story house with grey siding, white trim, and multiple windows, set against a clear blue sky. The house is partially obscured by a dark grey circular graphic element.

Property tools
that **make you**
the expert.

LEARN ABOUT

How to use GeoWarehouse



SCAN TO REGISTER
FOR TRAINING





4 KEY REASONS

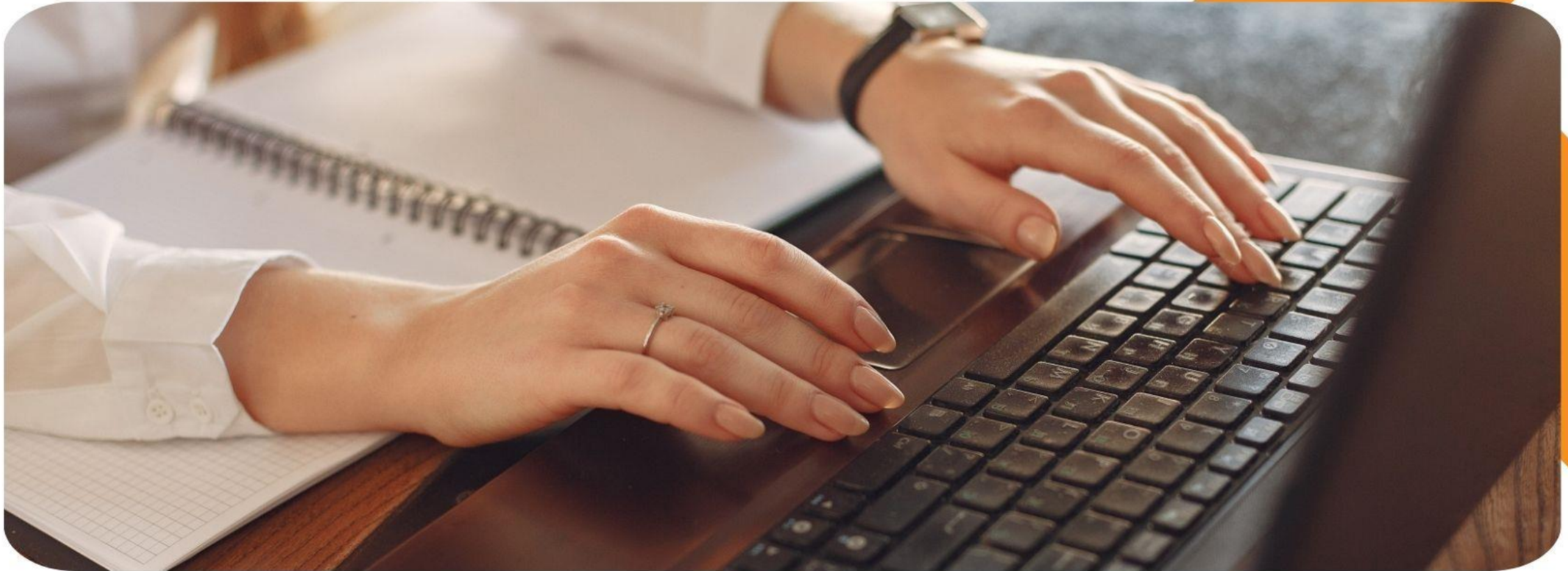
to Subscribe to
GeoWarehouse



1. GeoWarehouse is the single source of authoritative property data



2. Get access to exclusive reports to better serve you in your business



3. Improve Efficiency and Productivity with GeoWarehouse



4. Access to exclusive training





**For more information
visit our website:**

